

P R E S S R E L E A S E

PRESS EMBARGO FOR ALL DATA:

8.00 AM (7.00 AM GMT), 15 December 2015

Avenue des Nerviens 85

B-1040 Brussel

Tel (32 2) 732 55 50

Fax (32 2) 738 73 10

PROVISIONAL

NEW PASSENGER CAR REGISTRATIONS BY MARKET EUROPEAN UNION

15/12/2015

	November '15	November '14	%Change 15/14	Jan - Nov '15	Jan - Nov '14	%Change 15/14
AUSTRIA	23,381	21,619	+8.2	285,723	285,927	-0.1
BELGIUM	36,329	29,739	+22.2	468,325	455,949	+2.7
BULGARIA	2,130	1,595	+33.5	21,152	18,427	+14.8
CROATIA	2,209	1,900	+16.3	32,966	31,719	+3.9
CYPRUS	921	671	+37.3	9,385	7,721	+21.6
CZECH REPUBLIC	20,421	16,365	+24.8	211,089	175,626	+20.2
DENMARK	17,098	15,150	+12.9	189,087	173,510	+9.0
ESTONIA	1,552	1,955	-20.6	19,081	19,979	-4.5
FINLAND	8,992	7,220	+24.5	100,887	99,145	+1.8
FRANCE	150,334	135,067	+11.3	1,733,506	1,632,531	+6.2
GERMANY	272,377	250,082	+8.9	2,958,687	2,807,073	+5.4
GREECE	5,859	4,983	+17.6	68,989	64,831	+6.4
HUNGARY	6,590	5,901	+11.7	70,080	61,397	+14.1
IRELAND	948	771	+23.0	124,506	95,932	+29.8
ITALY	134,021	108,546	+23.5	1,464,747	1,268,380	+15.5
LATVIA	1,128	1,006	+12.1	12,705	11,452	+10.9
LITHUANIA	1,438	1,158	+24.2	15,878	13,481	+17.8
LUXEMBOURG	3,412	3,488	-2.2	43,837	46,157	-5.0
NETHERLANDS	40,516	32,192	+25.9	380,573	351,351	+8.3
POLAND	30,312	24,322	+24.6	317,614	298,054	+6.6
PORTUGAL	13,343	11,719	+13.9	165,329	130,922	+26.3
ROMANIA	8,022	5,669	+41.5	72,423	64,577	+12.1
SLOVAKIA	6,953	5,484	+26.8	70,652	66,020	+7.0
SLOVENIA	5,095	4,220	+20.7	56,017	49,923	+12.2
SPAIN	81,650	65,122	+25.4	945,623	781,868	+20.9
SWEDEN	31,352	25,916	+21.0	311,568	276,804	+12.6
UNITED KINGDOM	178,876	172,327	+3.8	2,453,426	2,310,237	+6.2
EUROPEAN UNION¹	1,085,259	954,187	+13.7	12,603,855	11,598,993	+8.7
EU15²	998,488	883,941	+13.0	11,694,813	10,780,617	+8.5
EU12³	86,771	70,246	+23.5	909,042	818,376	+11.1
ICELAND	793	413	+92.0	13,187	9,134	+44.4
NORWAY	12,600	11,486	+9.7	137,608	131,553	+4.6
SWITZERLAND	26,312	23,672	+11.2	291,141	269,085	+8.2
EFTA	39,705	35,571	+11.6	441,936	409,772	+7.8
EU + EFTA	1,124,964	989,758	+13.7	13,045,791	12,008,765	+8.6
EU15 + EFTA	1,038,193	919,512	+12.9	12,136,749	11,190,389	+8.5

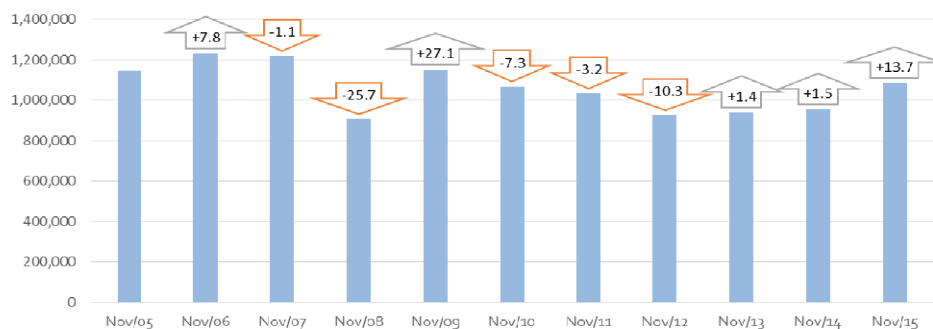
SOURCE: NATIONAL AUTOMOBILE MANUFACTURERS' ASSOCIATIONS

¹ Data for Malta n.a.

² Member States before the 2004 enlargement

³ Member States having joined the EU since 2004

New passenger car registrations in the EU - month trend | 2005-2015



For further information, please contact: Ms Francesca Piazza - Statistics & Communications Advisor - E-mail: fp@acea.be - Tel. (32) 2 738 73 55

Next press release: Friday 15 January 2015

This information is available on the ACEA website: <http://www.acea.be>